



ANATIS
BIOPROTECTION

Tricho-Gard® Allium

Target pests

- Cabbage moth (*Plutella xylostella*)
- Cabbage looper (*Trichoplusia ni*)
- Cabbage moth (*Mamestra brassicae*)
- Leek moth (*Acrolepiopsis assectella*)
- Cotton bollworm (*Helicoverpa armigera*)

Target crops

- Alliums (Leeks, Garlic, Onions, Shallots, Chives, etc.)
- Ornamental plants
- Greenhouses

Tricho-Gard®-Alliums are micro-parasitic wasps, specifically of the species *Trichogramma brassicae*. These parasitoids are particularly effective against various pests targeting alliums, crucifers, and other crops.

They lay their eggs inside the eggs of pest insects. The larvae develop by consuming the contents of these pest eggs, preventing their development and providing an effective and environmentally friendly method of pest control.

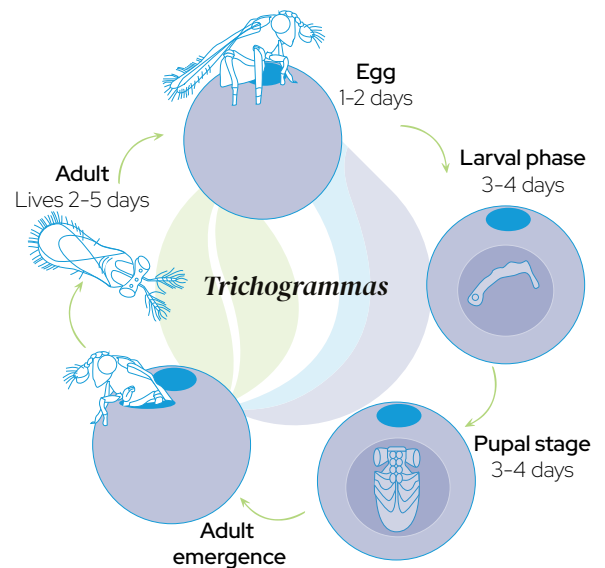
Tricho-Gard® are primarily used to prevent infestations by reducing pest populations at the egg stage, thereby minimizing the need for chemical interventions.

Life cycle

- **Life Cycle:** Lasts 7 to 10 days (variable depending on temperature).
- **Optimal Conditions:** Temperature: 77-86°F (25-30°C) and Relative Humidity: 60-80%.
- **Reproduction:** Once mated, the female searches for freshly laid host eggs to deposit her eggs inside and can lay 50 to 80 eggs.

Introduction rate

Introduction	Quantity	Frequency	Duration
Preventive	1 card per 1,000-2,000 ft ² (100 - 200 m ²) (depending on whether the card contains 4k or 8k parasitized eggs).	Every week	5-10 weeks
Curative	Increase to 1 card per 500-1,000 ft ² (50 - 100 m ²) if the pest pressure is high	Every week	Until control



Application

Introduce the Tricho-cards as soon as the first leek moths are detected, or ideally, before pest activity begins (late May to mid-June).

Handle the cards carefully by holding them by their edges.

For young plants, attach the cards about 4 in (10 cm) from the ground using a stick, and for more developed plants, place them at mid-height on the stem to maximize their effectiveness.

Replace each card after two weeks and introduce new ones weekly for 5 to 10 weeks, until the end of the corn borer egg-laying period, which typically lasts about five weeks.

Storage

Never freeze the cards. They can be refrigerated for a maximum of four weeks at 39.2-50°F (4-10°C).

Keep in a low-humidity environment to prevent mold.